

Capacitive Proximity Sensors Mounting Accessories Tank Mounting Wells



- Delrin or Teflon Housing materials
- For M18 or M30 capacitive proximity sensors
- Can be used with CA and EC series
- Ideal for food/pharmaceutical applications
- Band clamp secures sensor in well
- Extends life of sensors

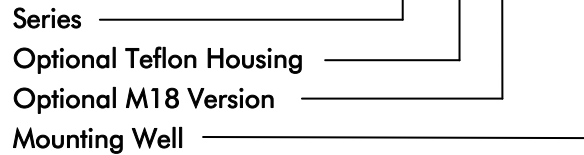
Product Description

Sensor wells are used to adapt tubular proximity sensors to a wide variety of vessels for level detection applications. These wells keep systems sealed prior to sensor installation, as well

as during sensor removal. Reliability and performance is improved because the sensor is isolated from fluids and materials.

Ordering Key

EC T 18-WELL



Type Selection

Housing Material

Delrin
Teflon

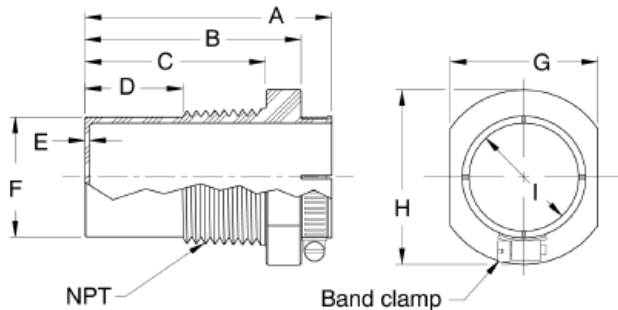
For M18 Sensors

EC18-WELL
ECT18-WELL

For M30 Sensors

EC-WELL
ECT-WELL

Dimensions



Model	A	B	C	D	E	F	NPT	G	H	I
EC.18-WELL	59.7 (2.35)	48.1 (1.90)	38.9 (1.53)	16.5 (0.65)	1.27 (0.05)	22.6 (0.89)	3/4 x 14	31.5 (1.24)	37.3 (1.47)	18.1 (0.71)
EC.-WELL					1.91 (0.08)	36.6 (1.44)		1-1/4 x 11.5	44.5 (1.75)	50.0 (1.97)