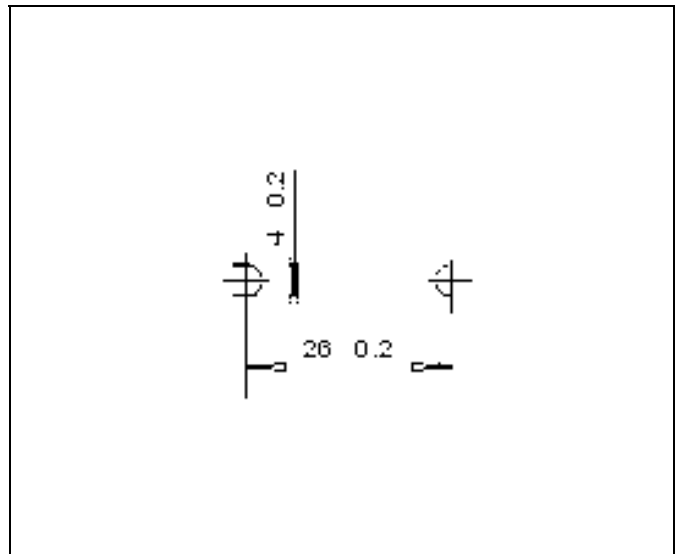
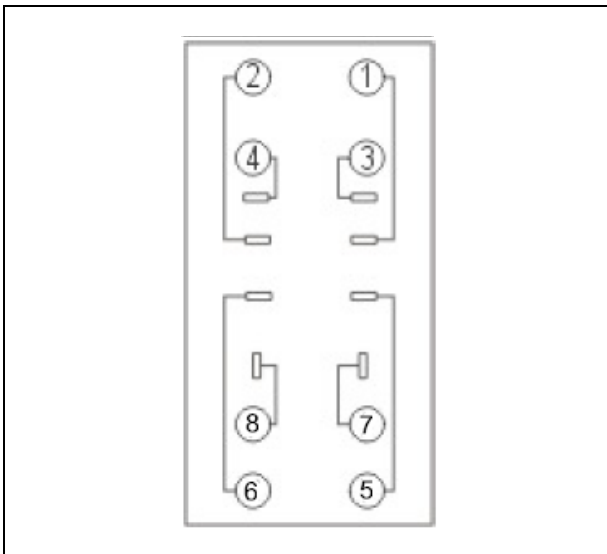
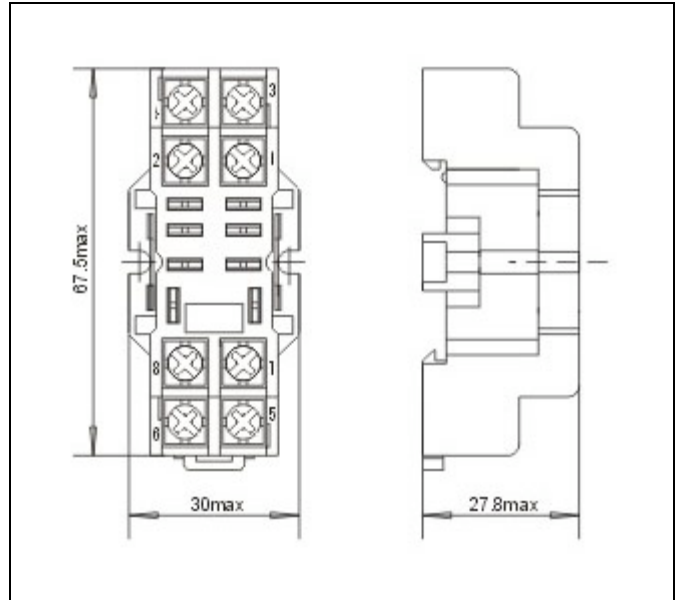
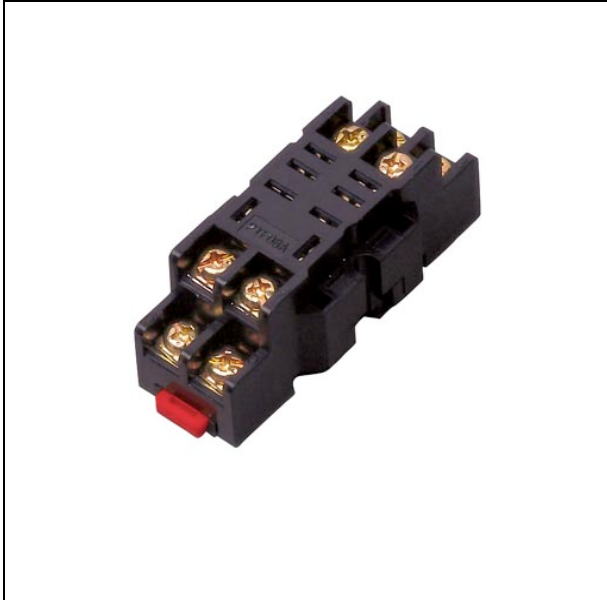


## Sockets for RPY series relays

### ZPY08

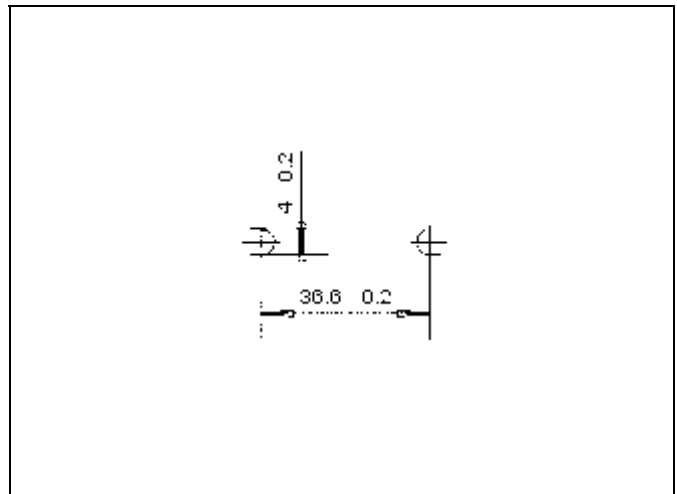
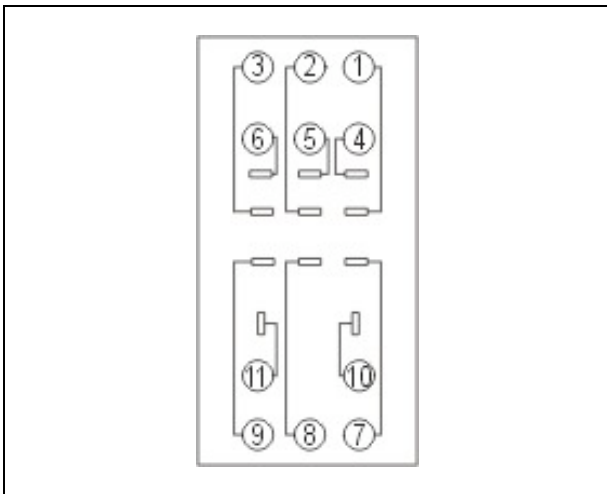
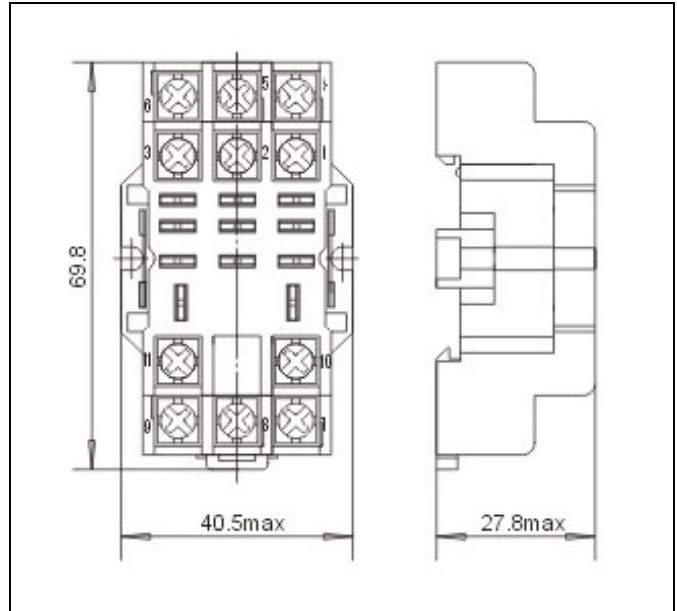


For DIN-rail mounting (DIN 46277-3) or by screws on chassis.

<b>Rated voltage</b>	300Vac
<b>Rated current</b>	10 A
<b>Insulation voltage</b>	>4kV
<b>Protection degree</b>	IP00
<b>Socket material</b>	Self extinguishing PA66
<b>Contact material</b>	Nickel plated – Cu Zn 33
<b>Hold-down spring (opt.)</b>	Steel
<b>Approvals</b>	CSA, UL

## Sockets for RPY series relays

### ZPY11

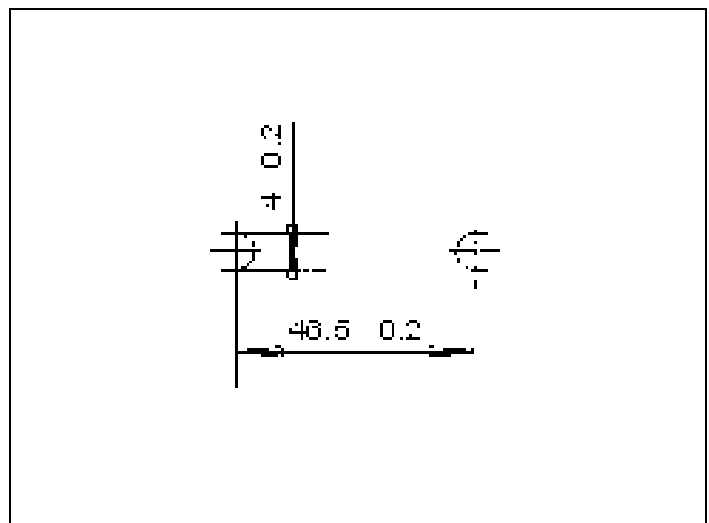
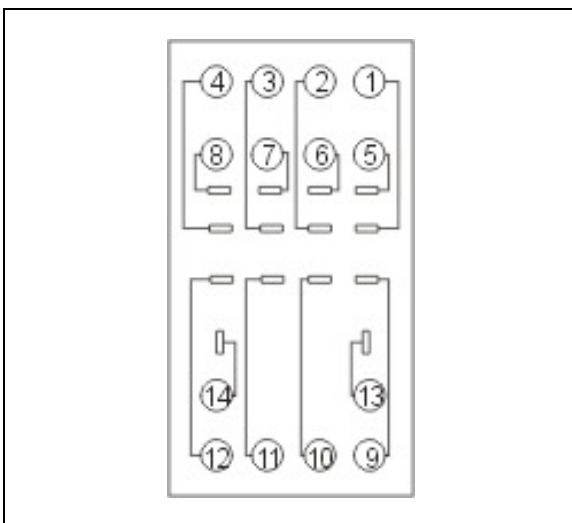
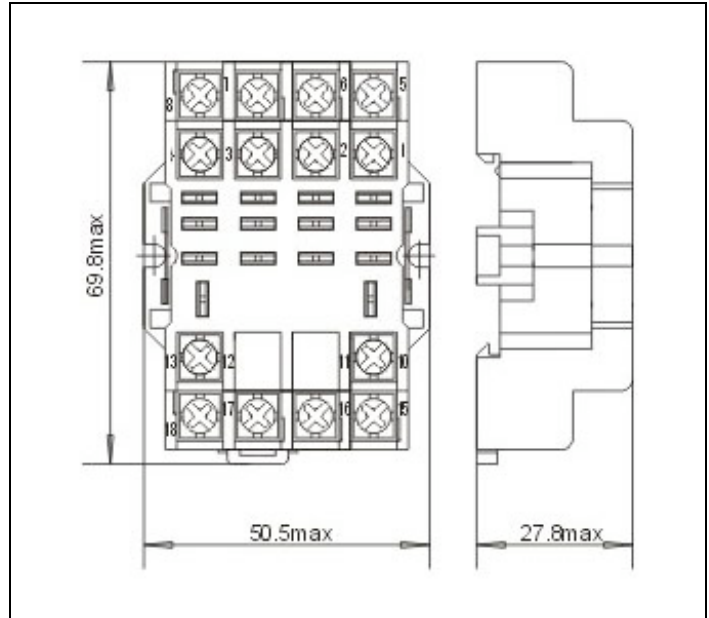


For DIN-rail mounting (DIN 46277-3) or by screws on chassis.

<b>Rated Voltage</b>	300Vac
<b>Rated current</b>	10A
<b>Insulation voltage</b>	>4kV
<b>Protection degree</b>	IP00
<b>Socket material</b>	Self extinguishing PA66
<b>Contact material</b>	Nickel plated – Cu Zn 33
<b>Hold-down spring (opt.)</b>	Steel
<b>Approvals</b>	CSA, UL

## Sockets for RPY series relays

### ZPY14



For DIN-rail mounting (DIN 46277-3) or by screws on chassis.

<b>Rated voltage</b>	300Vac
<b>Rated current</b>	10 A
<b>Insulation voltage</b>	>4kV
<b>Protection degree</b>	IP20
<b>Socket material</b>	Self extinguishing PA66
<b>Contact material</b>	Nickel plated - Cu Zn 33
<b>Hold-down spring (opt.)</b>	Steel - code
<b>Approvals</b>	CSA, UL