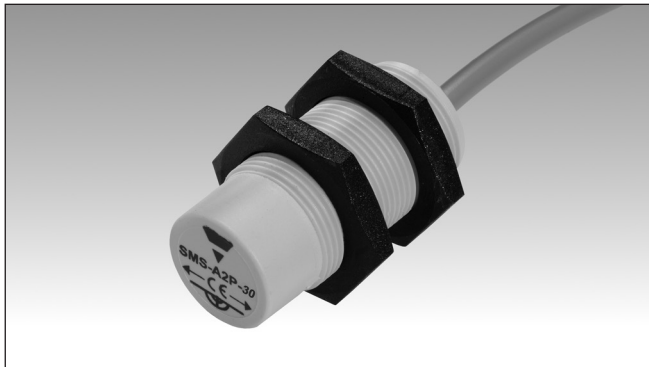


# Safety Magnetic Sensors

## Cylindrical Safety Magnetic Sensors

### SMSA2P30, SMSA3P30

CARLO GAVAZZI



- Suitable for applications in safety category 3 in accordance with EN ISO13849-1:2015 when connected to appropriate safety devices
- 2 NO outputs
- Cable output connection
- Cylindrical housing
- Multiple flux coding
- In compliance with CEI EN 60947-5-3:2000

### Product Description

The SMSAXP30 series is designed in conformity with EN ISO 12100:2010, EN 60204-1 and EN 1088. It is characterised by multiple flux coding and is suited for

applications up to safety Category 3, in accordance with EN ISO13849-1:2015 when connected to appropriate safety devices.

### Ordering Key

**SMS A2 P 30**

Safety magnetic sensor  
 Diameter  
 Housing material  
 Contact type

### Type Selection

Output	Operating distance	Safety category	Item code
2 NO	16 mm	3	<b>SMSA2P30</b>
2 NO	16 mm	3	<b>SMSA3P30</b>

### Output Specifications

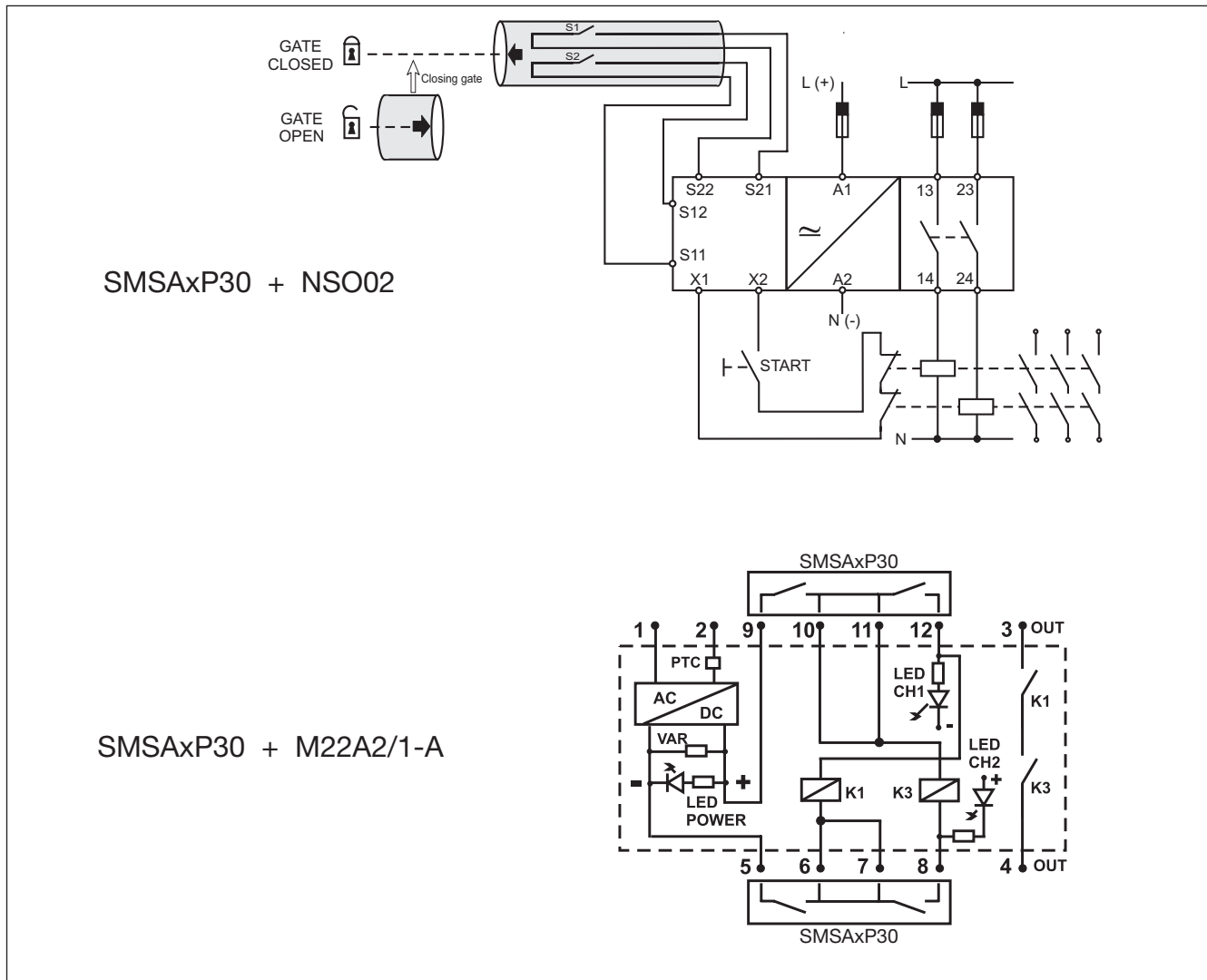
<b>Output</b>	Category 3 (EN ISO13849-1:2015) 2 NO
<b>Output connection</b>	Cable (PVC, AWG 26, L = 2 m, 4 x 0,15 mm <sup>2</sup> )
<b>Contact ratings</b> Max Switching Voltage Max Switching Current Max Switching Power	100 VAC 0,25 A 5 VA

### General Specifications

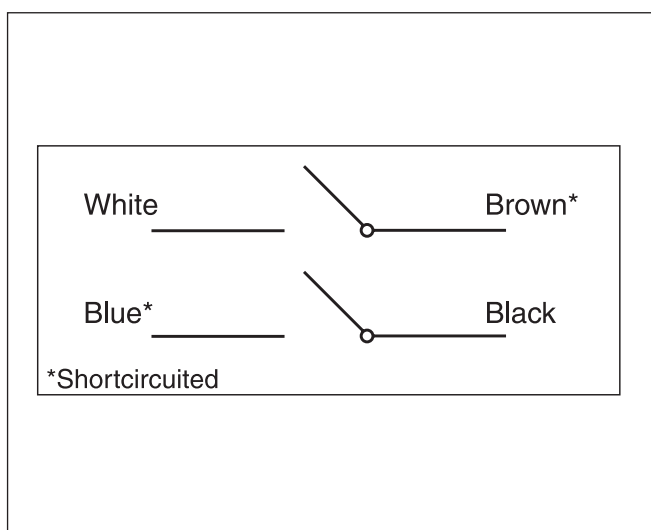
<b>Operating distance ON</b>	16 ± 5 mm
<b>Release distance OFF</b>	20 ± 6 mm
<b>Reset distance</b>	20 ± 6 mm
<b>Suitable magnetic unit</b> SMSA2P30 SMSA3P30	CLSA2 CLSA3
<b>Misalignment</b>	max ± 2 mm
<b>Housing</b> Dimensions SMSA2P30 SMSA3P30 Material	M18x1 M30x1.5 PBT + 30% glass
<b>Weight</b>	Approx. 70 g
<b>Environment</b> Degree of protection Operating temperature Storage temperature	IP 67 -25 ÷ +70 °C -25 ÷ +70 °C
<b>CE-marking</b>	Yes



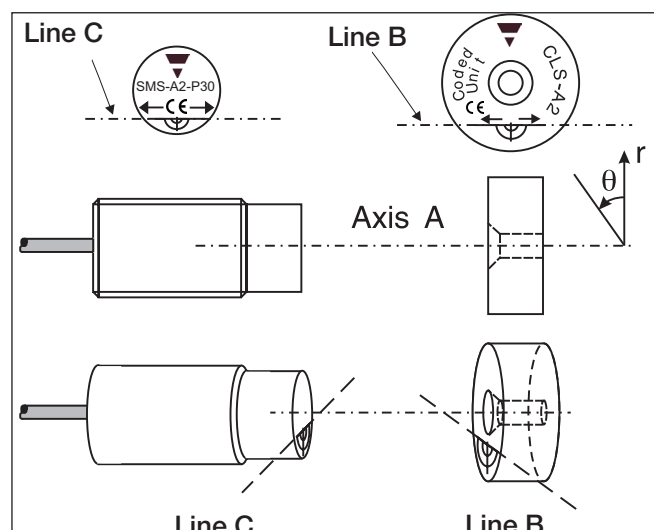
## Application



## Wiring Diagrams



## Operating Directions



## Dimensions

