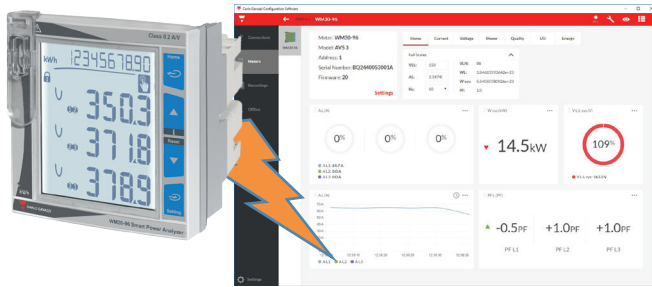


# Web Based Energy Management Solution



## Panel Mountable Solution: WM20 Power Analyzer



Example of Universal Configuration Software page

## DIN Rail Mountable Solution: EM24 Energy Analyzer



Example of EM2426 Setup Software page

### Applications

- Capable of being part of a **VMUC** energy management system
- Can also be a stand alone energy management meter
- This is an ideal OEM product, for machines with high energy consumption (HVAC rooftop units, electric ovens) to replace several panel meters
- WM20 natively logs kWh but it can also be sold as a voltage, current or power meter

### Ordering Codes:

Up to 230VAC: **WM20AV63H**

Up to 600VAC: **WM20AV53H**

### List Price:

\$450 + optional expansion modules

### Function:

- Modular, 1/4 DIN, revenue grade power analyzer for 1 or 3-phase systems
- Also available: More sophisticated, high-end **WM30** Power Quality Analyzers and **WM40** with Built-in Data Logger

### Code Specifications

- Measurement of V, A, W, VA, Var PF, Hz , THD
- Recording of +/- kWh and kvarh
- Optical port in front of the meter
- 0.2% accuracy V and I measurements
- Class 0.5 active energy accuracy
- Options for additional communication modules
- Options for additional digital outputs
- 115/230 VAC supply voltage
- 5A current transformer inputs
- cULus, CE

### Software:

- Works with **Universal Configuration Software**
- Software is free of charge

### Required Add-ons

Full range of **CTD Series** current transformers

### Optional Add-ons

- Modbus serial and TCP/IP modules
- BACnet IP and MS/TP modules
- Profibus DP module
- Dual digital output, relay or transistor



WM20 datasheet

### Applications

- Capable of being part of an energy management system
- An ideal OEM product for applications where any electrical variable needs to be measured
- Great complementary energy monitoring product for electrical panels
- Could replace several voltage/current/phase monitoring relays
- Applications include: plastic machines, solar charging systems, UPS systems, switch gear, etc.

### Ordering Codes:

Up to 230VAC: **EM24DINAV63DISX**

Up to 600VAC: **EM24DINAV53DISX**

### List Price:

\$599

### Function:

Non-modular DIN rail mountable energy analyzer for 1 or 3 phase applications

### Code Specifications

- Measurement of V, A, W, VA, Var PF, Hz
- Recording of +/- kWh and kvarh
- Counting of external energy pulses
- 0.5% accuracy V and I measurements
- Class 1 active energy accuracy
- RS-485 Modbus RTU communication
- Three digital inputs
- 115/230 VAC supply voltage
- 5A current transformer inputs
- cULus, CE

### Software:

- Works with **EM2426 Configuration Software**
- Software is free of charge

### Required Add-ons

Full range of **CTD Series** current transformers

### Optional Add-ons

Communication and I/O choices must be made before ordering

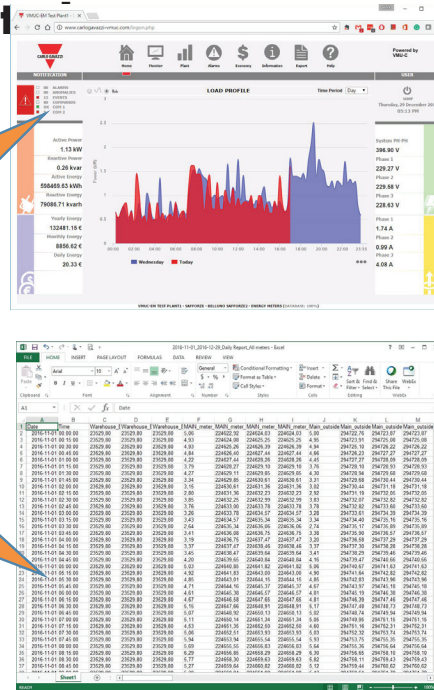
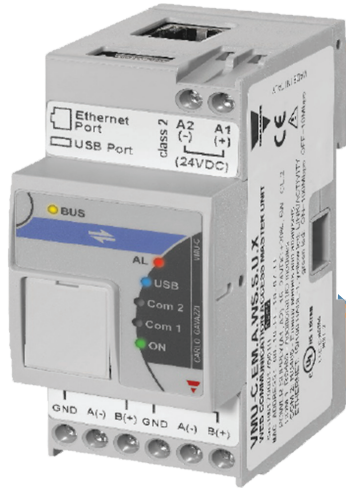


EM24 datasheet

# Web Based Energy Management Solution



## VMUC Data



### Applications

- Small, medium and large customers that require a cost effective and simple system to record, monitor and transmit electrical instantaneous variables and electrical energy usage
- Customers that are tired of paying monthly fees for rental of energy monitoring or data hosting systems.
- Submetering in apartment buildings. VMUC can act as a data logger for meters and data gateway to a billing server

**Ordering Code:** VMUCEMAWSSUX  
**List Price:** \$1,238

### Function:

Microprocessor based, modular data logging system that records, monitors and transmits analog and digital signals from network of energy meters and various types of sensors. The VMUC can be a stand alone energy management system, or be a part of existing building automation system.

### Code Specifications:

- Simple and powerful system that can log electrical parameters from up to 32 Carlo Gavazzi energy meters
- Expandable system that can log data from up to 3,200 meters, with help of data aggregators and server grade software
- Logs data from temperature probes, analog and pulse rate sensors with help of optional VMU I/O modules
- RS-485, Ethernet or USB connectivity from meters to data logger
- Ethernet connectivity for user interface, supported protocols include HTTP, FTP, Modbus TCP/IP
- Data backup with ether micro SD card or USB flash drive

### Software:

- In a typical application only a standard web browser is required
- Firmware updates are free of charge for as long as the hardware version is supported
- Demo webpage of a working VMUC installation: <http://www.carlogavazzi-vmuc.com/>
- Contact CARLO GAVAZZI's technical support department to arrange a walkthrough and/or to obtain the user name and password

### Required Add-ons:

- 24VDC power supply, consult data sheet for required wattage
- WM20, EM24 or any other compatible energy meter with Modbus communication

### Optional Add-ons

- VMU-D cellular modem module
- VMU-O I/O modules for digital inputs and outputs
- VMU-P environmental modules for connecting temperature probes and analog inputs
- VMU-M for expending number of digital and analog inputs that can be connected to VMUC
- VMU-Y data aggregator for expending data logging capability from 33 to 320 meters
- EM2 Software for expending data logging capability from 321 to 3,200 meters



VMUC datasheet



<http://www.carlogavazzi-vmuc.com/>