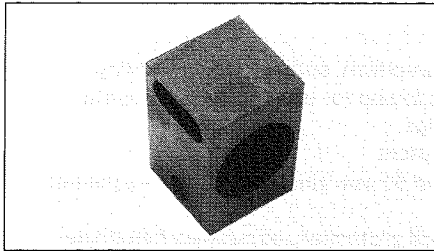


# Proximity Sensors Inductive Mounting Accessories Mounting Brackets



- Block style plastic mounting bracket for cylindrical sensors
- Inner diameter: DB1 30mm  
DB2 20mm  
DB3 13.5mm

## Product Description

Mounting bracket for cylindrical proximity switches

## Ordering Key

**DB 1**

Mounting bracket \_\_\_\_\_

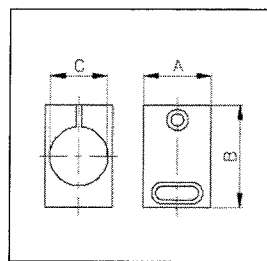
## Type Selection

Inner Diameter	Type
30 mm	DB 1
20 mm	DB 2
13.5 mm	DB 3

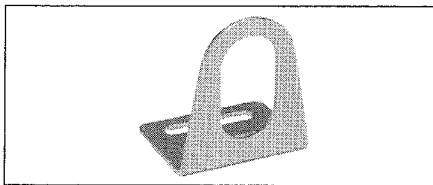
## Specifications

Material	Acetal
Color	Black

## Dimensions



Type	A mm	B mm	C Ø mm
DB 1	33	50	30
DB 2	23	35	20
DB 3	16	27	13.5



- Types for 8, 12, 18, and 30 mm proximity sensors
- Zinc plated steel construction

## Product Description

Right angle sensor mounting bracket for 8, 12, 18, and 30 mm diameter proximity sensors. Elongated mounting holes for easy alignment.

## Ordering Key

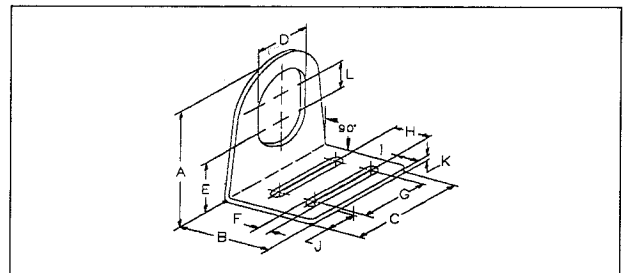
**BRACKET-RA-18**

Type: Right Angle Bracket \_\_\_\_\_  
Sensor Diameter (mm) \_\_\_\_\_

## Type Selection

Sensor Mounting

Inner Diameter	Type
8 mm	BRACKET-RA-08
12 mm	BRACKET-RA-12
18 mm	BRACKET-RA-18
30 mm	BRACKET-RA-30



Type	A mm	B mm	C mm	D mm	E mm	F mm	G mm	H mm	I mm	J mm	K mm	L mm
BRACKET-RA-08	25.4	28.7	31.8	8.7	7.9	5.5	15.9	11.9	7.1	7.9	1.8	9.5
BRACKET-RA-12	38.1	34.8	38.1	12.7	13.9	5.5	19.1	14.3	7.9	9.5	1.8	12.7
BRACKET-RA-18	50.8	34.8	44.5	19.1	19.1	5.5	25.4	14.3	7.9	9.5	1.8	15.9
BRACKET-RA-30	63.5	44.5	57.2	30.5	23.0	5.5	34.8	20.6	10.3	11.2	2.2	19.1