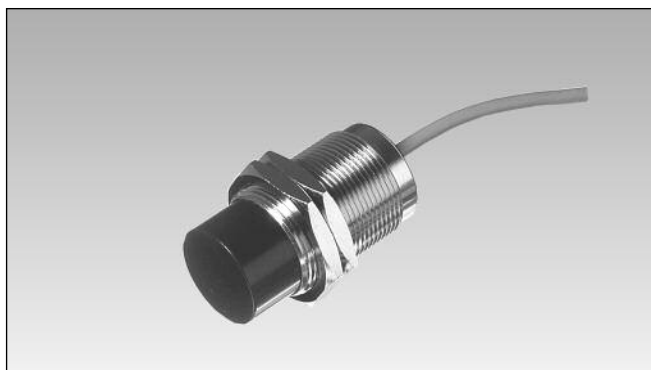


Proximity Sensors Inductive Analogue Voltage Output, Nickel-plated Brass Housing Types IA, M18, M30



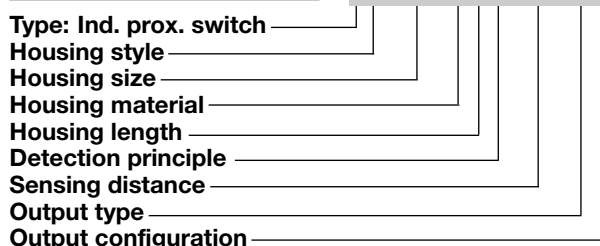
- Nickel-plated brass housing
- Housing diameter: 18 and 30 mm
- Sensing distance: 0 - 5 mm, 3.5 - 11 mm
- Power supply: 12/17 to 30 VDC
- Output: 0-1.6 V, 0-10 V
- Protection degree IP67
- 2 m PVC cable

Product Description

Inductive proximity sensor with analogue 0-1.6 or 0-10 V voltage output. The analogue signal can be directly connected to measuring systems. Nickel-plated brass housing, M18 and M30. Connection with 2 m PVC cable.

Ordering Key

IA 18 ALC 05 AH-K



Type Selection

Detecting range	Output voltage	Housing dimensions	Connection	Ordering no. Analogue Voltage Output, PNP
0 - 5 mm	0-1.6 V	M18	Cable, 2 m	IA 18 ALC 05 AH-K
3.5 - 11 mm	0-10 V	M30	Cable, 2 m	IA 30 ASC 11 AK-K

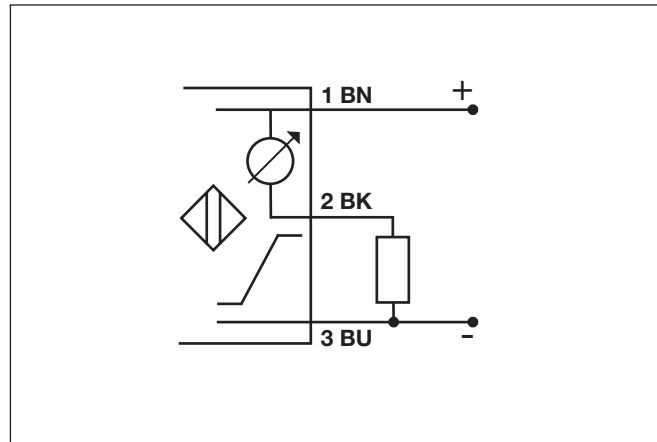
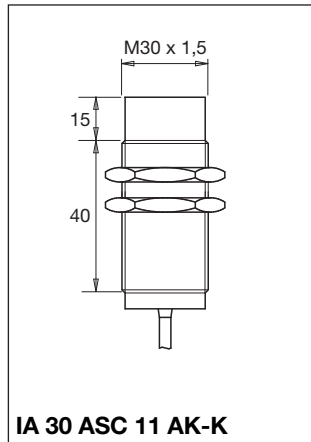
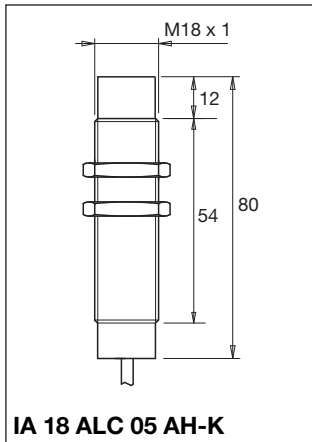
Both types for non-flush mounting

Specifications

Rated operational volt. (U_B) IA 18 ALC 05 AH-K IA 30 ASC 11 AK-K	12 to 30 VDC (ripple incl.) 17 to 30 VDC (ripple incl.)	Temperature drift IA 18 ALC 05 AH-K IA 30 ASC 11 AK-K	< 10% < 4%
Ripple	≤ 10%	Ambient temperature Operating IA 18 ALC 05 AH-K IA 30 ASC 11 AK-K Storage	-25° to +70°C (-13° to +158°F) 0° to +60°C (32° to +140°F) -30° to +75°C (-22° to +167°F)
Output voltage IA 18 ALC 05 AH-K IA 30 ASC 11 AK-K	0 to 1.6 V 0 to 10 V	Degree of protection	IP 67 (Nema 1, 3, 4, 6, 13)
No-load supply current (I_o) IA 18 ALC 05 AH-K IA 30 ASC 11 AK-K	< 25 mA < 33 mA	Housing material	Nickel-plated brass
Load	> 1 kΩ	CE-marking	Yes
Detecting range IA 18 ALC 05 AH-K IA 30 ASC 11 AK-K	0 - 5 mm 3.5 - 11 mm	Connection Cable	2 m, PVC, AWG 22
Linearity error IA 18 ALC 05 AH-K IA 30 ASC 11 AK-K	< 5% < 1.5%		
Frequency of operating Cycles (f)	100 Hz		
Rate of rise	≥ 9 mm/ms		

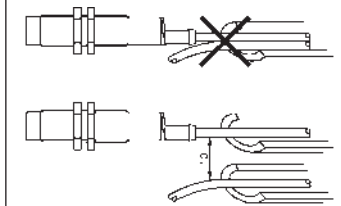
Dimensions

Wiring Diagram

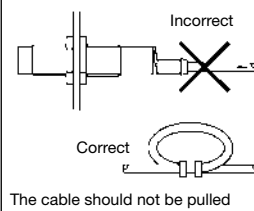


Installation Hints

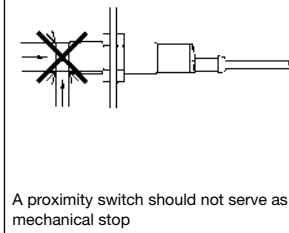
To avoid interference from inductive voltage/current peaks, separate the prox. switch power cables from any other power cables, e.g. motor, contactor or solenoid cables



Relief of cable strain



Protection of the sensing face



Switch mounted on mobile carrier

