

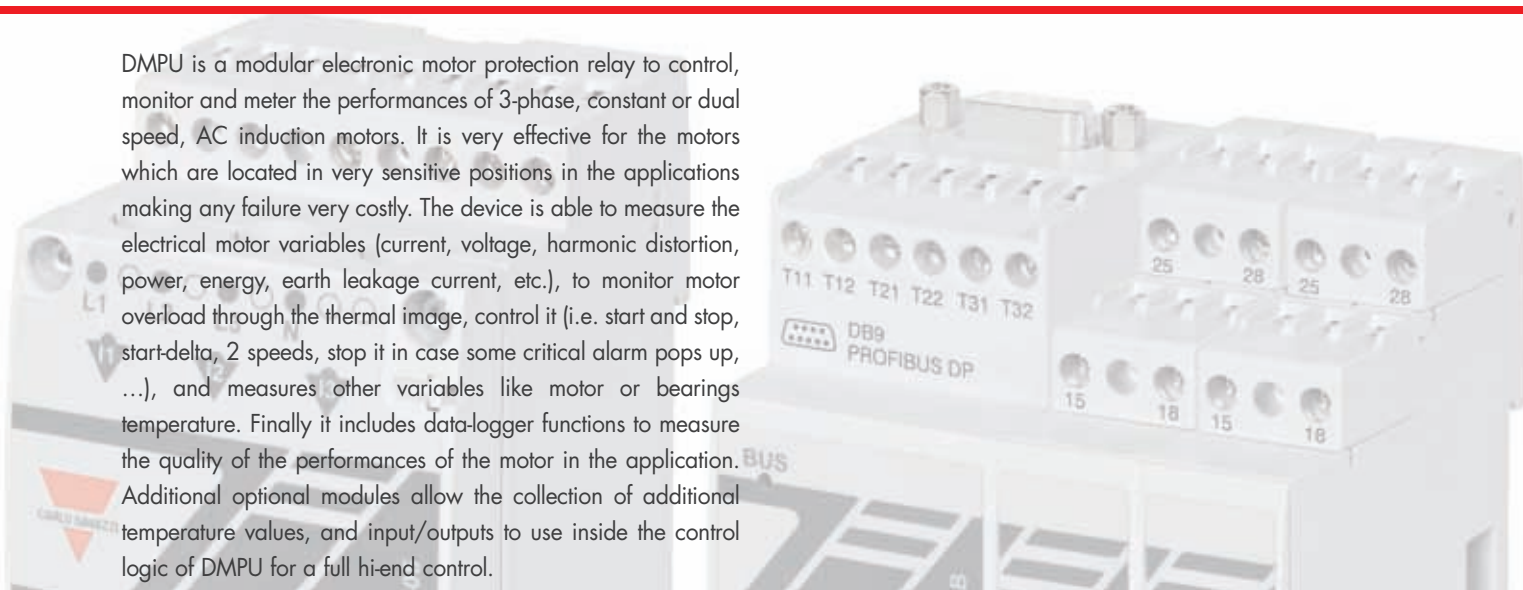
Motor Protection Relay DMPU

Switch

DMPU

Motor Protection Unit DMPU

DMPU is a modular electronic motor protection relay to control, monitor and meter the performances of 3-phase, constant or dual speed, AC induction motors. It is very effective for the motors which are located in very sensitive positions in the applications making any failure very costly. The device is able to measure the electrical motor variables (current, voltage, harmonic distortion, power, energy, earth leakage current, etc.), to monitor motor overload through the thermal image, control it (i.e. start and stop, start-delta, 2 speeds, stop it in case some critical alarm pops up, ...), and measures other variables like motor or bearings temperature. Finally it includes data-logger functions to measure the quality of the performances of the motor in the application. Additional optional modules allow the collection of additional temperature values, and input/outputs to use inside the control logic of DMPU for a full hi-end control.



Modular installation

DMPU modularity allows to select the necessary features for the specific application. This means minimal space requirements for basic installations as well as huge I/O potential.

Full variables monitoring

DMPU monitors all the electrical variables: voltages, currents, power, power factor, voltages and current asymmetry and the total harmonic distortion. The motor control system is ready for plant energy management.

Variables trend storage

The device stores the trend of the selected variables and the device status changes (as power ON/OFF, motor start and stop, digital inputs, alarm trips, ...). DMPU also has a fast datalogger for start-ups for fast troubleshooting.

How to increase the lifetime of the motor

DMPU allows to protect the motor against damage due to thermal effects taking place in overload conditions. The protection function trips when motor heating, i.e. the heat quantity in the motor, (represented by the TCU

parameter-Thermal Capacity Used) reaches 100% of the maximum one for that specific motor. This is calculated starting from the motor plate parameters and the electrical variables measured to estimate how long an

overload condition can be sustained before motor overheats and fails. The user can also monitor the motor temperature, through PT100 or PTC probes, and warn or trip if the temperature is too high.



How to monitor energy consumption

The measurement module measures all the instantaneous electric variables as voltages, currents, harmonic distortions, power factors, active, reactive and apparent powers, and the respective energies. Each of these variables can be monitored to signal (for instance to the supervision system, or in the worst cases stopping the motor) a potentially dangerous situation.

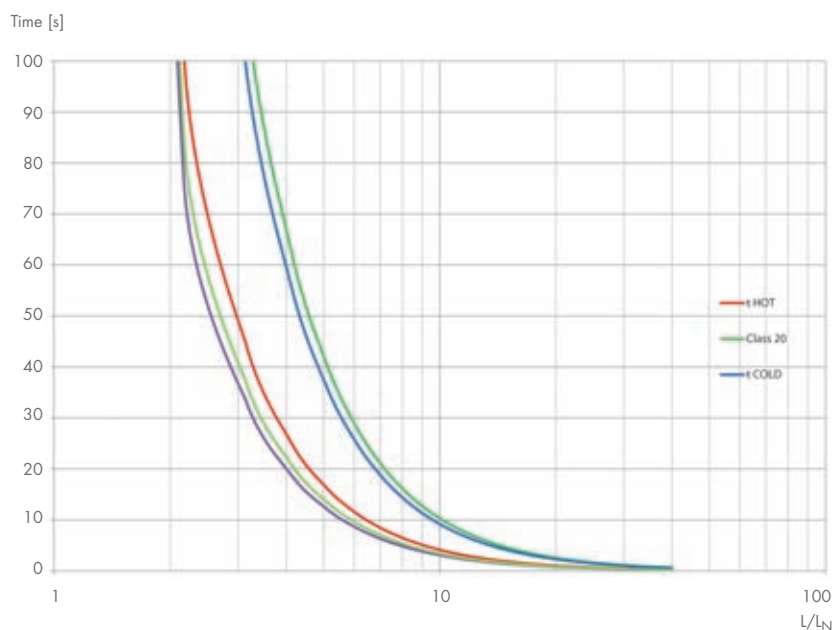


How to prevent the malfunction or trip for failure

DMPU implements several ANSI (American National Standard Institute) functions to protect the motor from operations that may damage it. They are the most used for high-end motor protection.

For example:

- Monitors motor inverse current (current imbalance) which is one of the main causes of motor heating (ANSI 46).
- Prevents the locked or stalled rotor conditions (ANSI 51 LR and ANSI 48).
- Estimates earth fault current from the vector sum of the currents (ANSI 64) and monitors the earth leakage current through a core balance transformer (ANSI 64 EL).
- Monitors the number of starts per hour or the time since previous start or stop to limit overheating caused by frequent restarts (ANSI 66).



Motor Protection Unit DMPU

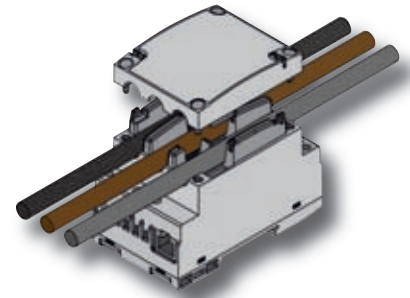
How to control motor operation

All control and monitoring functions are provided by DMPU:

- Start, Stop and alarm reset from local physical buttons or via software commands from the Modbus or Profibus network.
- Motor Reverse or Star-delta controls.
- Motor stop for major problems identification.

- Alarm display to the supervision system or using properly located lights or buzzers on site.

The module DMPUC-05 has a 3-phase split-core connection for current measurement to allow easy setup in case of maintenance or refurbishment.

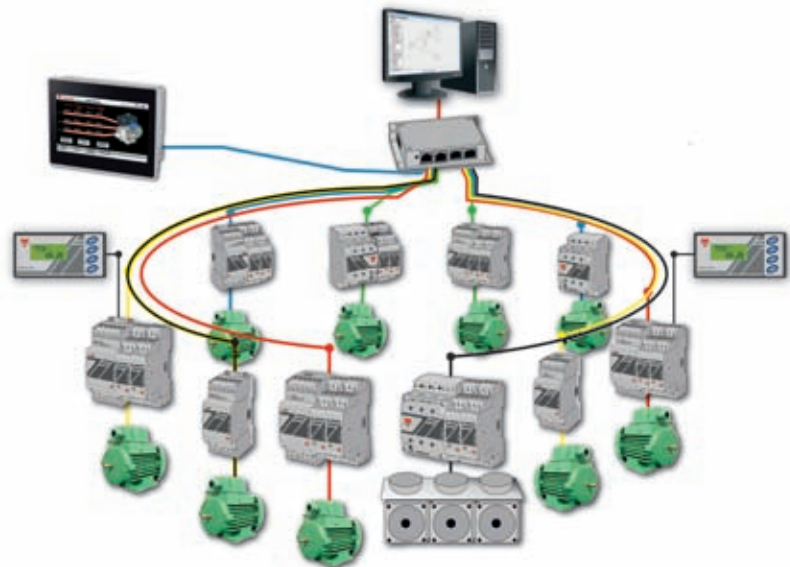


How to manage a control system

Through the communication features, it is possible to transmit all the relevant instantaneous values to a supervision control system for data collection and process control.

Profibus and Modbus TCP/IP protocols are available to easy insert DMPU in the majority of the plants.

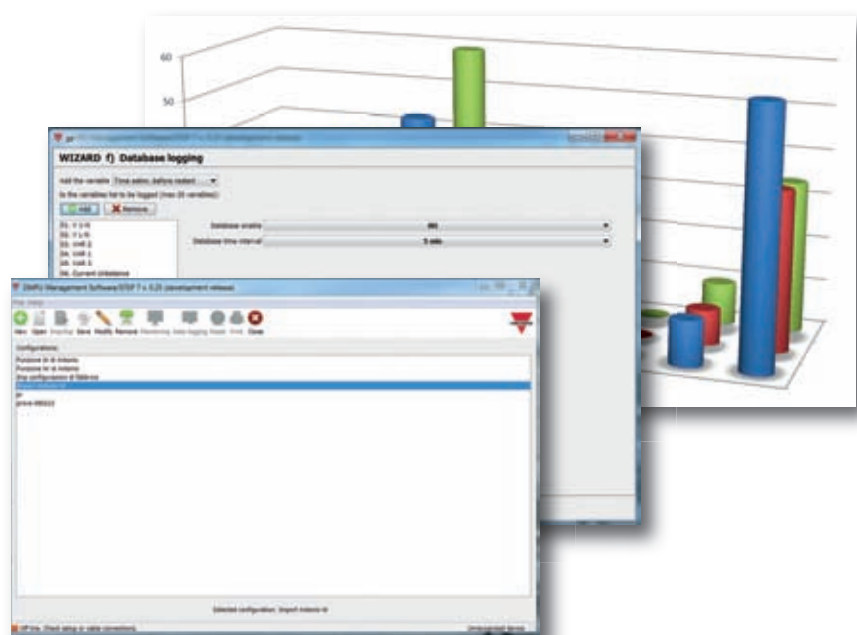
The operator interface are freely programmable and can show instantaneous values, display the alarm situations with customized messages and start-stop the motor.



How to see the historical trend of variables

DMPU is provided with three dataloggers to store the trend over time of:

- Up to 20 variables at the choice of the user (like voltages, temperatures, TCU, ...).
- Fast track up to 20 variables at every start (again at the choice of the user).
- Record events like starts and stops, system power ON/OFF, change of status of physical as well as network inputs and outputs, alarm trips, ...



Versatile, a characteristic that makes work easier

Versatile mounting

DMPU, in its minimal configuration is just 90x63.2x90 mm (WxHxD). It includes 3 inputs and 2 outputs (if 7 inputs and 6 outputs are needed then it is just 126x63.2x90).

Even in this case it is also split into two parts to be located freely inside the drawer.

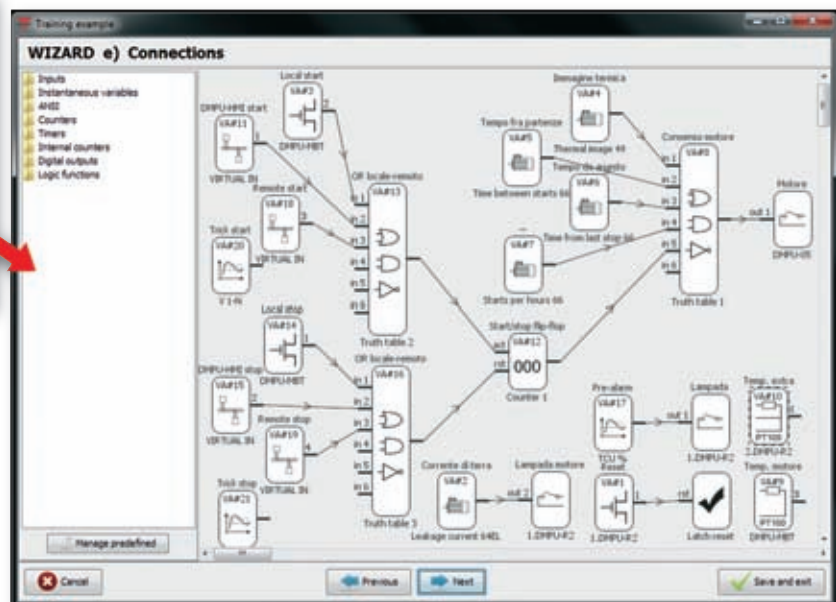
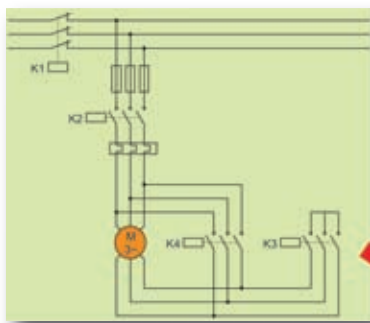
When using additional I/O's the main unit can be divided into two parts on different DIN-rails (for instance with 15 inputs and 14 outputs the split can be 54x63.2x90 + 90x63.2x90 + 54x63.2x90, and there are more options).



Easy configuration

Plant design is made straightforward through graphic blocks configuration and connection, where the blocks are all the variables that can be used, as inputs, outputs, ANSI functions, electrical or temperature values, logical functions,

timers or counters. DMPU-PS configuration software is also provided with monitoring functions for faster setup before releasing the motor to the supervision system.



DMPU



Motor Protection Unit DMPU

DMPU-MBT and DMPU-PRB main modules



- Communication port for Profibus (DMPUC-PRB) or Modbus TCP/IP (DMPUC-MBT).
- RS485 port (Modbus) to connect the operator interface or the PC when programming the unit.
- Connection to plug-in additional modules.
- 3 PTC or PT100 or digital inputs.
- Data logging and event data stamping functions.
- 24VDC power supply voltage.
- Dimensions: 2-DIN modules.



Modbus®

DMPU-05 measurement module

- Measures 3-phase currents and voltages.
- Split-core current measurement up to 5A (then external CT's).
- 2 relay outputs.
- Connected to the main module via cable to allow free location into the drawer.
- Power supply from the main module (no need of further connections).
- Dimensions: 3-DIN modules.



DMPU-R2 I/O module



- 2 PTC or PT100 or digital inputs.
- 2 relay outputs.
- Dimensions: 1-DIN module.
- Plugged to the main module and supplied through it.

DMPU-EL Earth leakage current module and CTG core balance transformer



- Core balance transformer input, from 250 to 1000 ratio.
- 1 relay output dedicated to earth leakage alarm.
- 3 digital inputs.
- 0.03A to 30A set-point.
- Dimensions: 1-DIN module.
- Plugged to the main module and supplied through it.
- CTG core balance transformer with internal diameter from 35 to 210mm.

DMPU-HMI operator panel

- Displays the instantaneous variables.
- LED and display alarm warning.
- Four programmable keys.
- Freely configurable pages.
- 2 lines LCD.



BTM-T4/T7 touchscreen



- 7" and 4.3" color touchscreen.
- Displays the instantaneous variables (currents, voltages, powers energy, etc.), virtual alarms, and inputs status.
- Remote motors control using the virtual inputs.
- 2 TCP/IP ports, 1 RS485 port to connect one or more DMPUs.

Main specifications

Measured voltages	Direct up to 690V, then through external VT's
Measured currents	Direct up to 5A then through external CT's
Inputs	Up to 23 (three on the main module, two for each expansion module). Each configurable as contact, PT100 (2 or 3 wires) or PTC.
Measured earth leakage current	Through external core balance transformer, alarm set-point from 0.03 to 30A
Relay outputs	Up to 22 (two on the measurement module, two for each expansion module)
DMPU-PS software	To configure the device; monitor the system; download the logged values
Communication protocols	Modbus RTU, Modbus TCP/IP, Profibus
Operating temperature	-25 to +55°C (-13°F to 131°F) (R.H from 0 to 90% non condensing @ 40°C)
Installation category	Cat. III (IEC60664, EN60664)
Approvals	CE, cUL (UL508) [UL up to 600V]
Mounting	DIN-rail
Dimensions	Basic configuration: 90x63.2x90 mm (WxHxD) Full configuration: 270x63.2x90 mm (WxHxD) Other intermediate configurations available
DMPU-HMI operator panel	Dimension: 96x48x88 (WxHxD) Power supply 24VDC ± 20% Twin RS485 port (1 for programming, 1 for communication)

OUR SALES NETWORK IN EUROPE

AUSTRIA - Carlo Gavazzi GmbH
Ketzergergasse 374, A-1230 Wien
Tel: +43 1 888 4112
Fax: +43 1 889 10 53
office@carlogavazzi.at

BELGIUM - Carlo Gavazzi NV/SA
Mechelsesteenweg 311, Bo-1800 Vilvoorde
Tel: +32 2 257 4120
Fax: +32 2 257 41 25
sales@carlogavazzi.be

DENMARK - Carlo Gavazzi Handel A/S
Over Hadstenvej 40, DK-8370 Hadsten
Tel: +45 89 60 6100
Fax: +45 86 98 15 30
handel@gavazzi.dk

FINLAND - Carlo Gavazzi OY AB
Petaksentie 2-4, FI-00661 Helsinki
Tel: +358 9 756 2000
Fax: +358 9 756 20010
myynti@gavazzi.fi

FRANCE - Carlo Gavazzi Sarl
Zac de Paris Nord II, 69, rue de la Belle
Etoile, F-95956 Roissy CDG Cedex
Tel: +33 1 49 38 98 60
Fax: +33 1 48 63 27 43
french.team@carlogavazzi.fr

GERMANY - Carlo Gavazzi GmbH
Pfnorstr. 10-14
D-64293 Darmstadt
Tel: +49 6151 81000
Fax: +49 6151 81 00 40
info@gavazzi.de

GREAT BRITAIN - Carlo Gavazzi UK Ltd
7 Springlakes Industrial Estate,
Deadbrook Lane, Hants GU12 4UH,
GB-Aldershot
Tel: +44 1 252 339600
Fax: +44 1 252 326 799
sales@carlogavazzi.co.uk

ITALY - Carlo Gavazzi SpA
Via Milano 13, I-20020 Lainate
Tel: +39 02 931 761
Fax: +39 02 931 763 01
info@gavazziacbu.it

NETHERLANDS - Carlo Gavazzi BV
Wijkermeerweg 23,
NL-1948 NT Beverwijk
Tel: +31 251 22 9345
Fax: +31 251 22 60 55
info@carlogavazzi.nl

NORWAY - Carlo Gavazzi AS
Melkeveien 13, N-3919 Porsgrunn
Tel: +47 35 93 0800
Fax: +47 35 93 08 01
post@gavazzi.no

PORTUGAL - Carlo Gavazzi Lda
Rua dos Jerónimos 38-B,
P-1400-212 Lisboa
Tel: +351 21 361 7060
Fax: +351 21 362 13 73
carlogavazzi@carlogavazzi.pt

SPAIN - Carlo Gavazzi SA
Avda. Iparraguirre, 80-82,
E-48940 Leioa (Bizkaia)
Tel: +34 94 480 4037
Fax: +34 94 480 10 61
gavazzi@gavazzi.es

SWEDEN - Carlo Gavazzi AB
V:a Kyrkogatan 1,
S-652 24 Karlstad
Tel: +46 54 85 1125
Fax: +46 54 85 11 77
info@carlogavazzi.se

SWITZERLAND - Carlo Gavazzi AG
Verkauf Schweiz/Vente Suisse
Sumpfstrasse 6312,
CH-632 Steinhausen
Tel: +41 41 747 4535
Fax: +41 41 740 45 40
info@carlogavazzi.ch

OUR SALES NETWORK IN NORTH AMERICA

USA - Carlo Gavazzi Inc.
750 Hastings Lane,
USA-Buffalo Grove, IL 60089,
Tel: +1 847 465 6100
Fax: +1 847 465 7373
sales@carlogavazzi.com

CANADA - Carlo Gavazzi Inc.
2660 Meadowvale Boulevard,
CDN-Mississauga Ontario L5N 6M6,
Tel: +1 905 542 0979
Fax: +1 905 542 22 48
gavazzi@carlogavazzi.com

MEXICO - Carlo Gavazzi Mexico S.A. de
C.V.
Calle La Montaña no. 28, Fracc. Los
Pastores
Naucalpan de Juárez, EDOMEX CP 53340
Tel & Fax: +52.55.5373.7042
mexicosales@carlogavazzi.com

OUR SALES NETWORK IN ASIA AND PACIFIC

SINGAPORE - Carlo Gavazzi Automation
Singapore Pte. Ltd.
61 Tai Seng Avenue
#05-06 UE Print Media Hub
Singapore 534167
Tel: +65 67 466 990
Fax: +65 67 461 980

MALAYSIA - Carlo Gavazzi Automation
(M) SDN. BHD.
D12-06-G, Block D12,
Pusat Perdagangan Dana 1,
Jalan PJU 1A/46, 47301 Petaling Jaya,
Selangor, Malaysia.
Tel: +60 3 7842 7299
Fax: +60 3 7842 7399

CHINA - Carlo Gavazzi Automation
(China) Co. Ltd.
Unit 2308, 23/F.,
News Building, Block 1, 1002
Middle Shennan Zhong Road,
Shenzhen, China
Tel: +86 755 83699500
Fax: +86 755 83699300

HONG KONG - Carlo Gavazzi
Automation Hong Kong Ltd.
Unit 3 12/F Crown Industrial Bldg.,
106 How Ming St., Kwun Tong,
Kowloon, Hong Kong
Tel: +852 23041228
Fax: +852 23443689

OUR COMPETENCE CENTRES AND PRODUCTION SITES

Carlo Gavazzi Industri A/S
Hadsten - **DENMARK**

Carlo Gavazzi Ltd
Zejtun - **MALTA**

Carlo Gavazzi Controls SpA
Belluno - **ITALY**

Uab Carlo Gavazzi Industri Kaunas
Kaunas - **LITHUANIA**

Carlo Gavazzi Automation
(Kunshan) Co., Ltd.
Kunshan - **CHINA**

HEADQUARTERS

Carlo Gavazzi Automation SpA
Via Milano, 13 - I-20020
Lainate (MI) - **ITALY**
Tel: +39 02 931 761
info@gavazziautomation.com



CARLO GAVAZZI
Automation Components

Energy to Components!

www.gavazziautomation.com

